

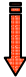



HOUSE OF SWEDEN

Fire fighting



ACTION PLAN FOR FIRE FIGHTING

Information in case of fire at House of Sweden

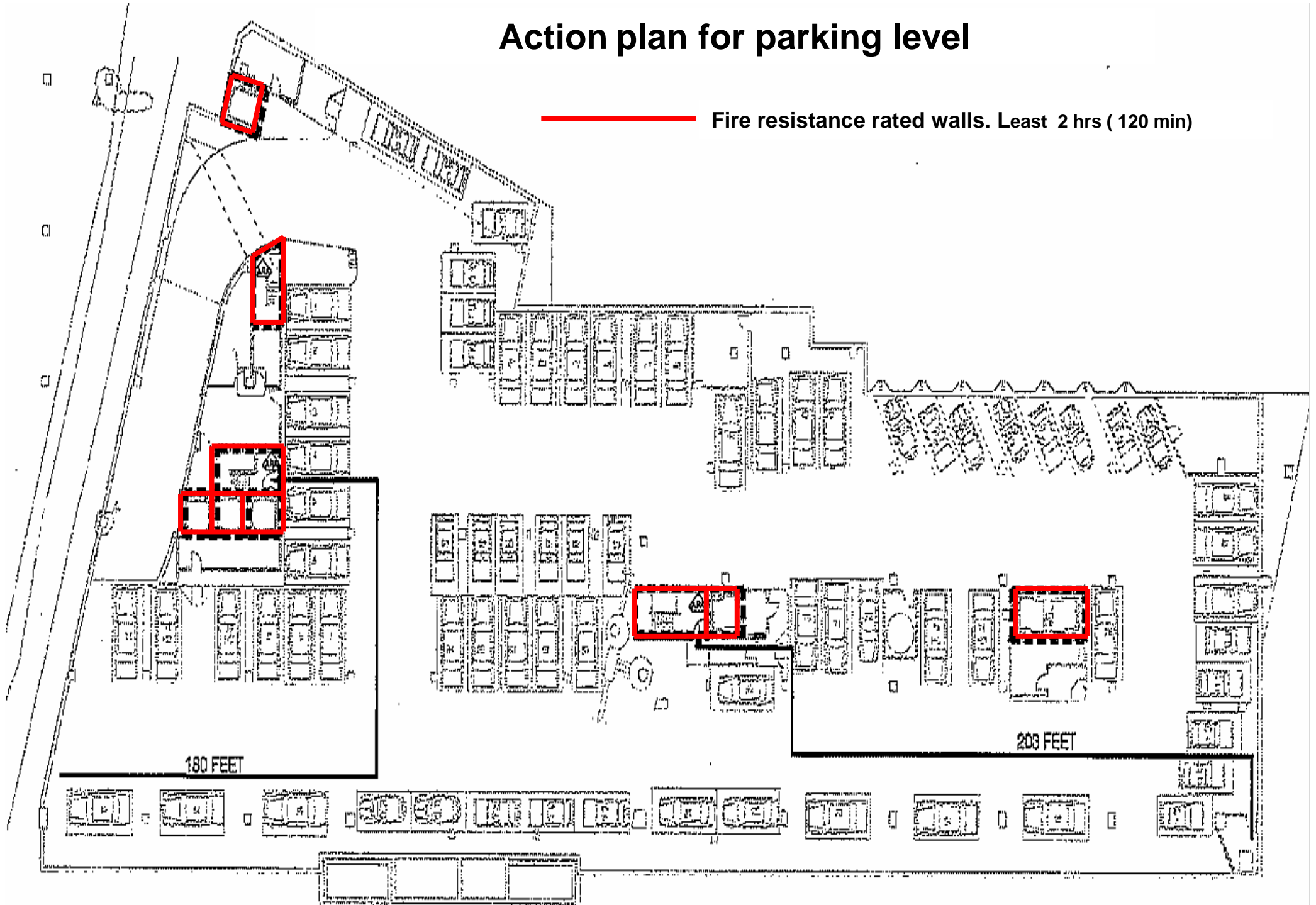
- Recommended entrance for firefighting - note the drawings 
- Note separate instructions for firefighting when the floodproofing is mounted
- Particular risks in the building (note the drawings) 
- The receptionist (dressed with red vest) gives information of evacuation status.
- Telephonenumber to contact person in separate list
- The reassembly place is situated close to the boathouse by the Potomac river
- The sprinklercentral is located in the 1st floor – note the drawings 
- Start and stop of fan for firegasventilation of atrium, note separate instruction
- Predetermined places inside and close to the building for the first information to the evacuated persons – note the drawings
- Areas in the building and objects that need extra attention – note this symbol in the drawings 

DESCRIPTION OF ACTIVITIES AND MAXIMUM NUMBER OF PERSONS PER FLOOR

Floor	Part of building	Activities	Number of occupants in room
Parking level	Under ground connecting HoS with the other house on the same property	Parking for approx. 75 cars and a small store room	A few occupants staying temporarily
1 st floor	Split level floor	Technical rooms, storerooms, catering pantry, office, auditorium, conference centre and exhibition hall.	320 temporary persons
2nd Floor	Ground- and entrance floor	Entrance, two receptions (entrance for Ministry for Foreign Affairs and one entrance for other visitors) exhibition hall and one of the Ministry for F. A. offices.	180 temporary persons and 10 workplaces
3rd floor	One floor above the entrance floor	Office for Ministry of Foreign Affairs	37 workspaces
4th floor		9 apartments. One apartment is combined with an office	Approx. 20 residents and 5 workspaces
5th floor		8 apartments. One apartment is combined with an office	Approx. 20 residents and 5 workspaces.
6th floor		Open roof terrace	Maximum of 200 guests och occupants

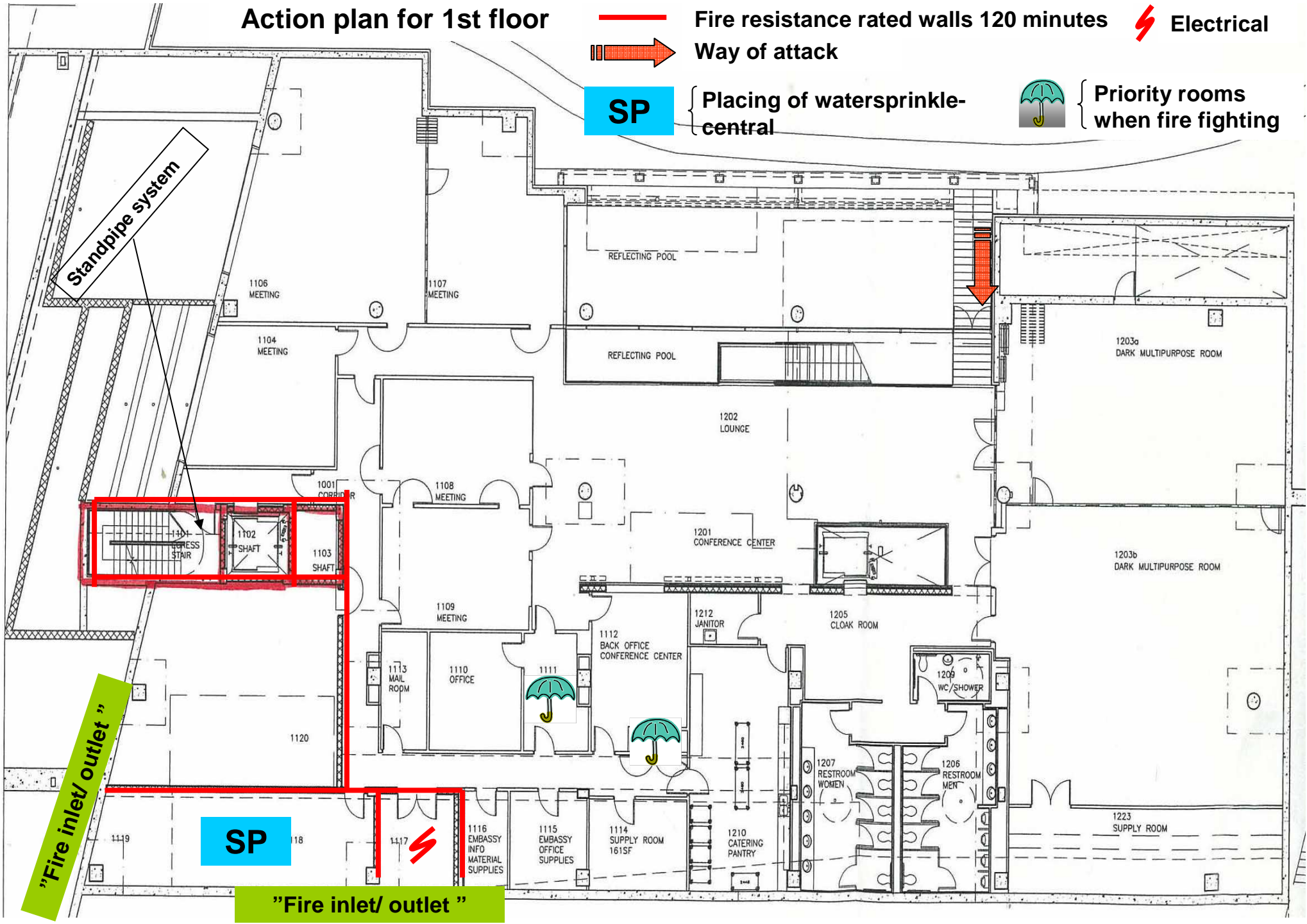
Action plan for parking level

— Fire resistance rated walls. Least 2 hrs (120 min)






Action plan for 1st floor

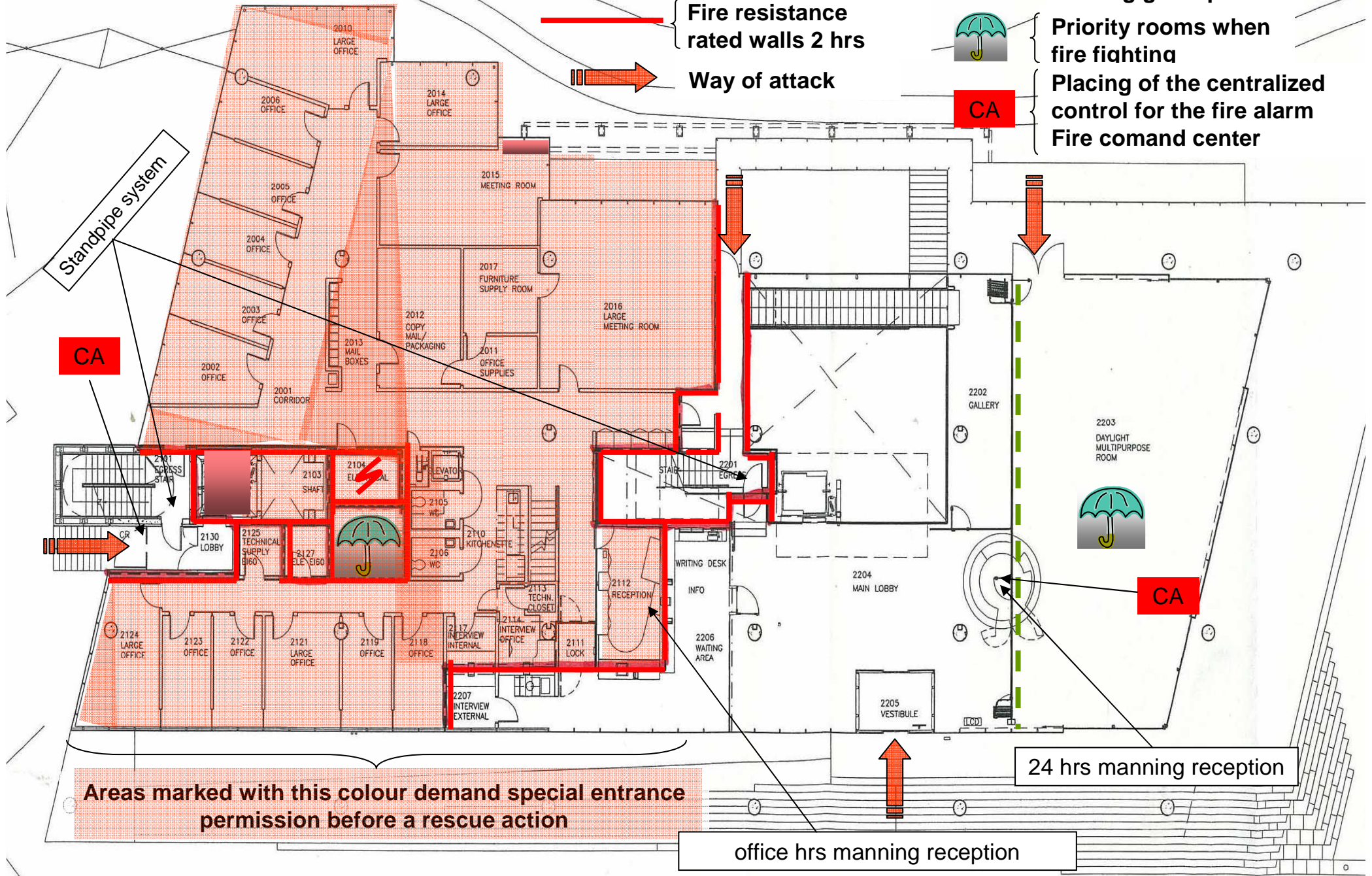
-  Fire resistance rated walls 120 minutes
-  Electrical
-  Way of attack
-  Placing of watersprinkle-central
-  Priority rooms when fire fighting



Action plan for 2nd floor

 Fire resistance rated walls 2 hrs
 Way of attack

 Sliding glass panel
 Priority rooms when fire fighting
 Placing of the centralized control for the fire alarm
 Fire comand center



Action plan for 3rd floor

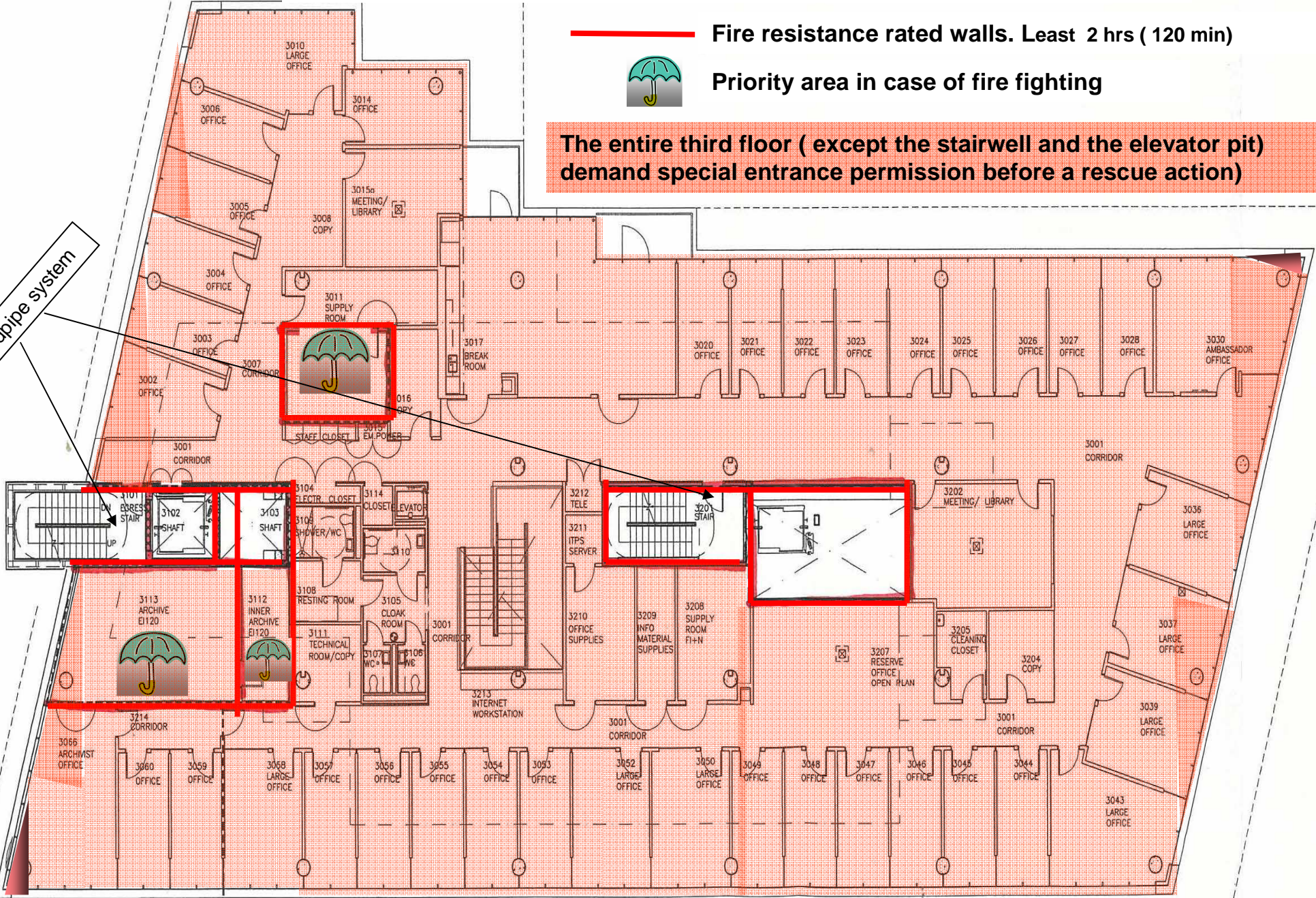
 Fire resistance rated walls. Least 2 hrs (120 min)



Priority area in case of fire fighting

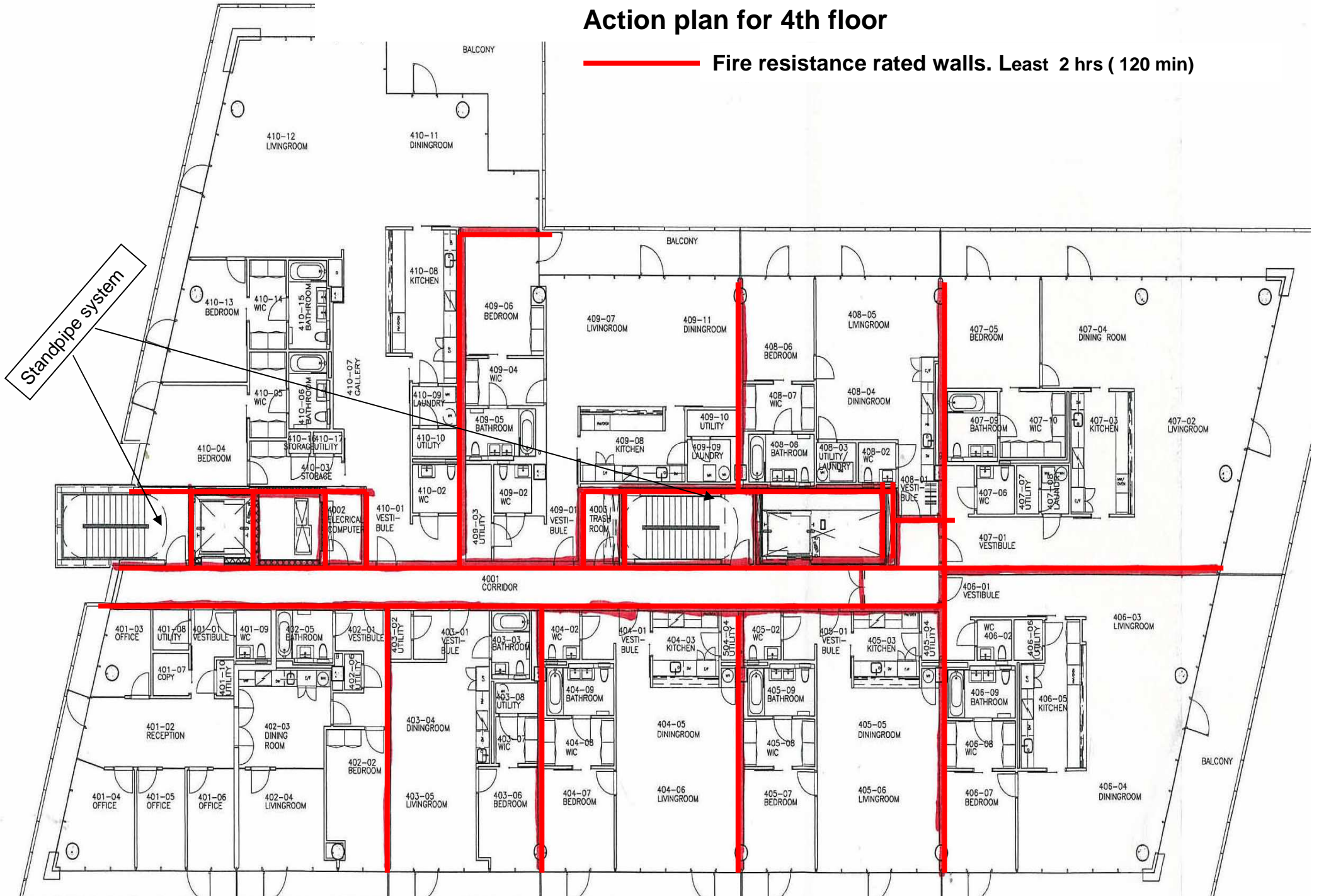
The entire third floor (except the stairwell and the elevator pit) demand special entrance permission before a rescue action)

Standpipe system



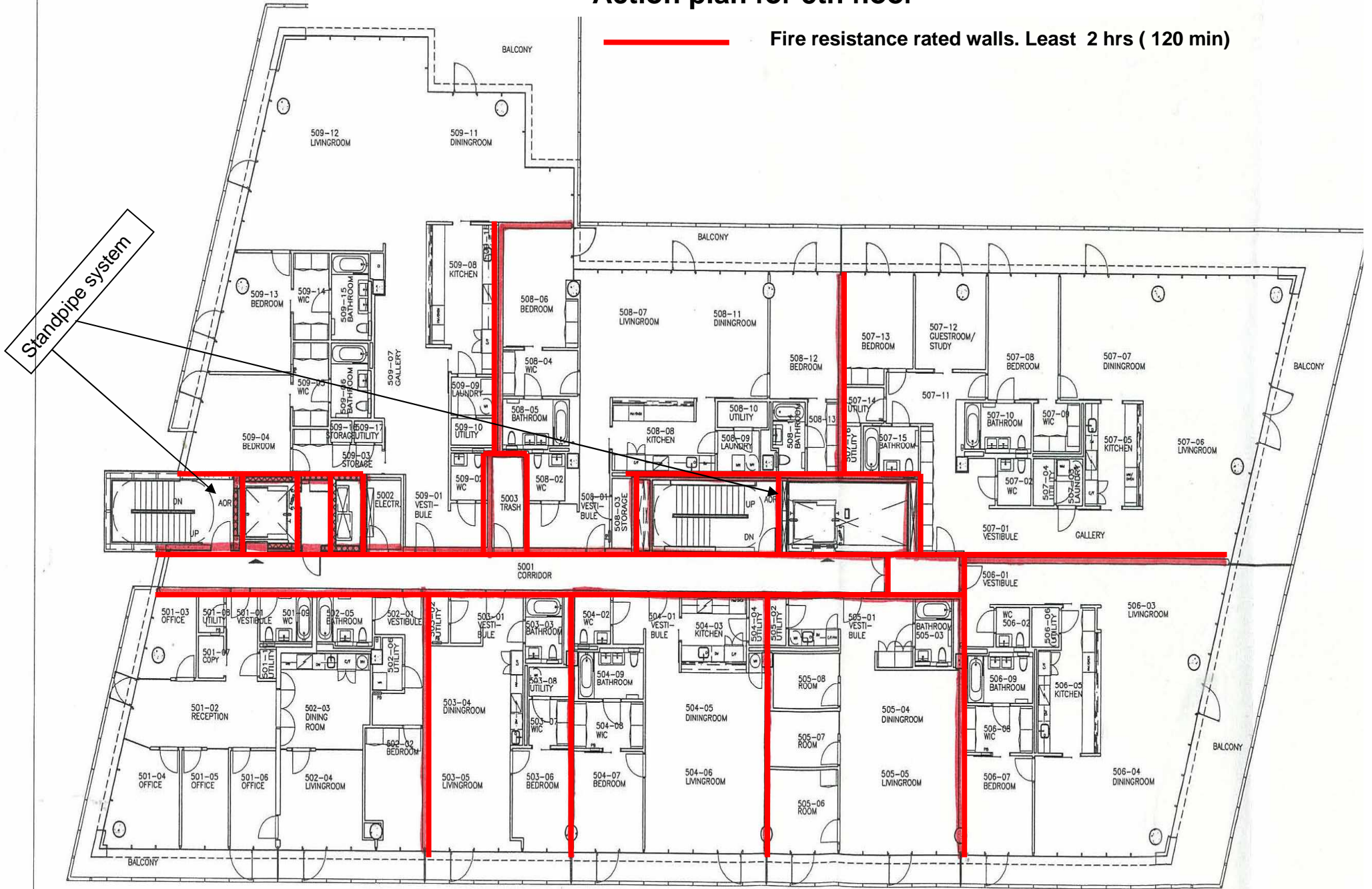
Action plan for 4th floor

— Fire resistance rated walls. Least 2 hrs (120 min)



Action plan for 5th floor

Fire resistance rated walls. Least 2 hrs (120 min)



Action plan for open floor terrace (6th floor)

